



# **CANADIAN PLASTICS**

## **INJECTION MOLDERS'**

### **BENCHMARK SURVEY**

#### **2006**

# ***Final Report***

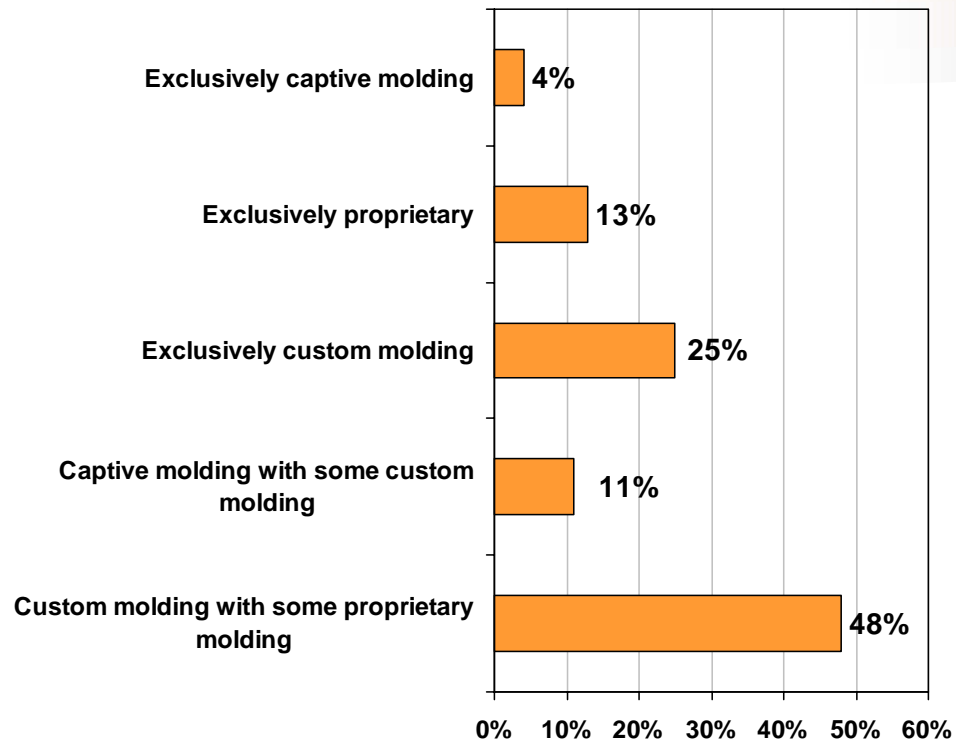
## **Objective**

**The primary objective of this survey was to find out how Canadian injection molders are faring in today's challenging market.**

## **Method**

**In November 2006, surveys were sent via e-mail to 979 people at injection molding plants on Canadian Plastics' circulation list. In total, 90 completed questionnaires were returned, yielding a response rate of 9%.**

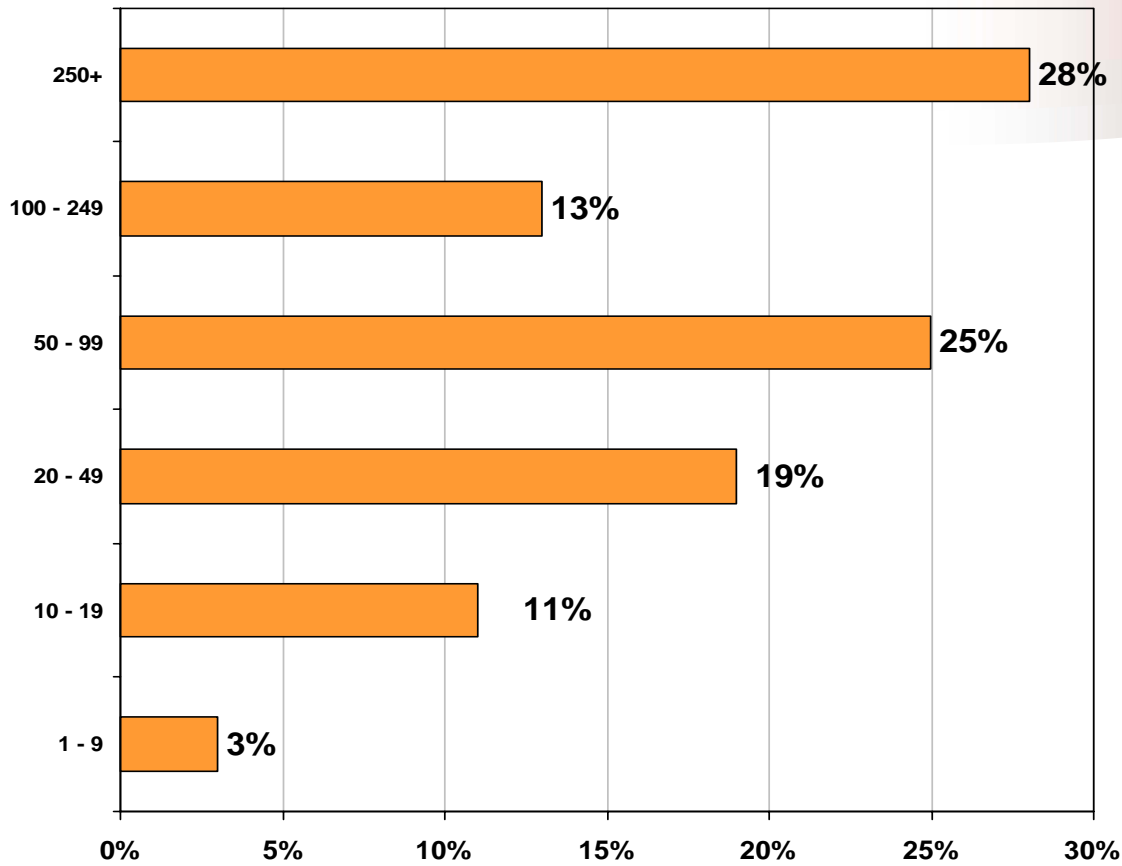
# Type Of Molding Operations



Percentage Chart

n = 84

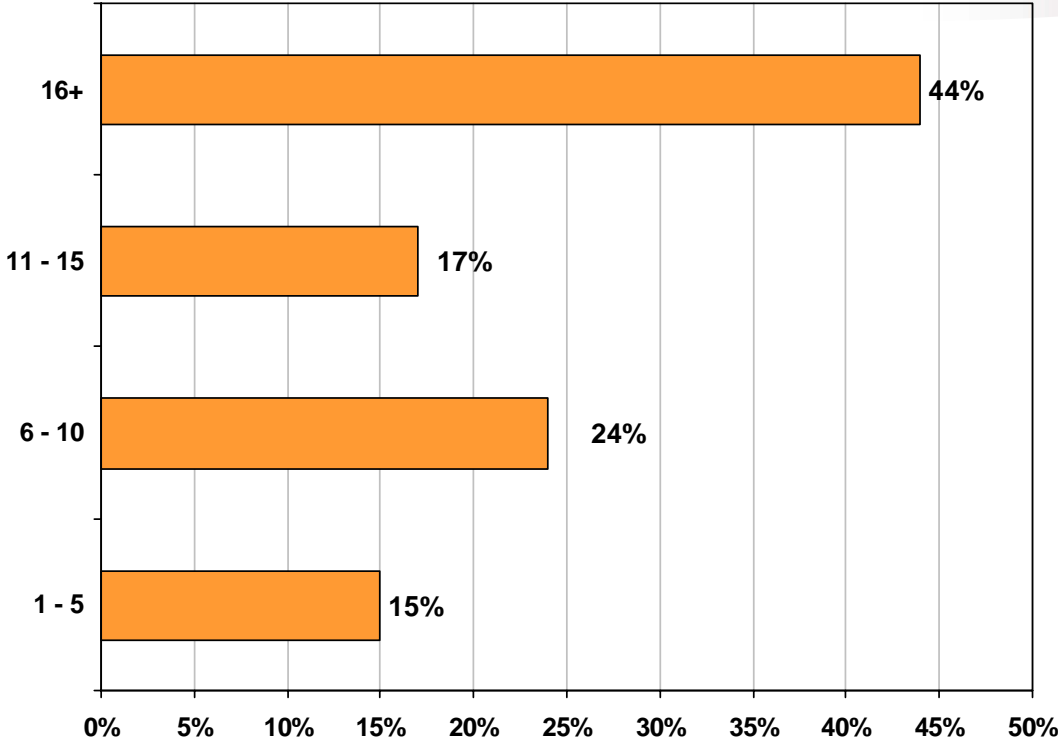
# Number of Employees



Percentage Chart

n = 88

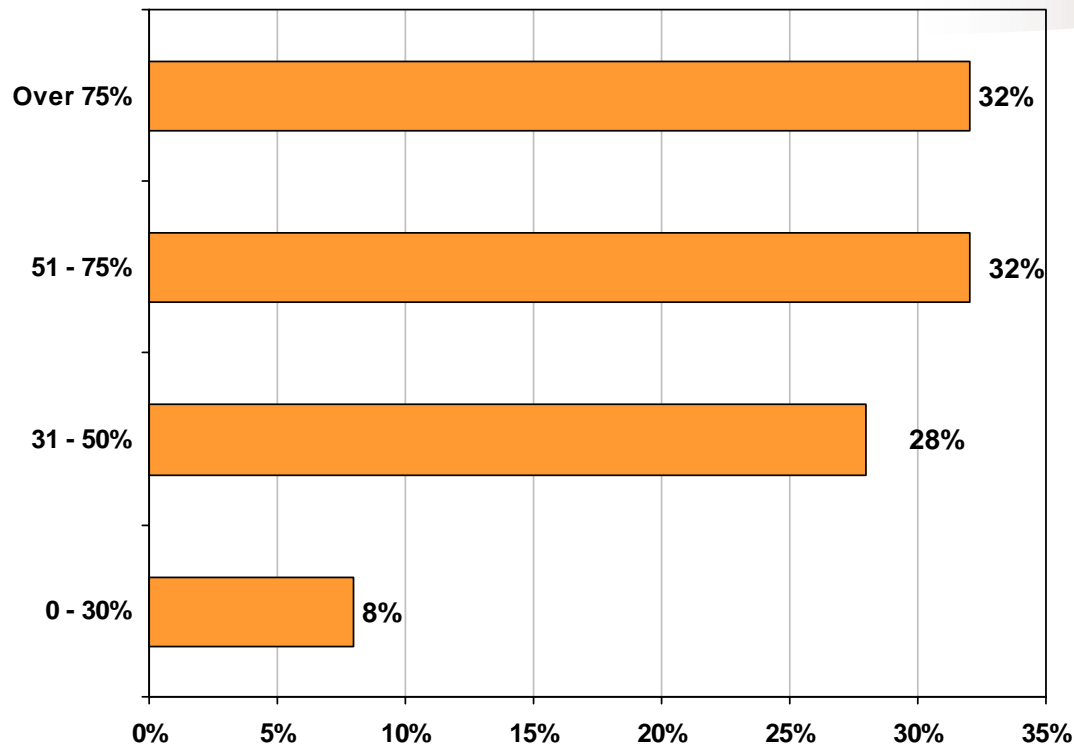
# Number Of Injection Molding Machines



Percentage Chart

n = 88

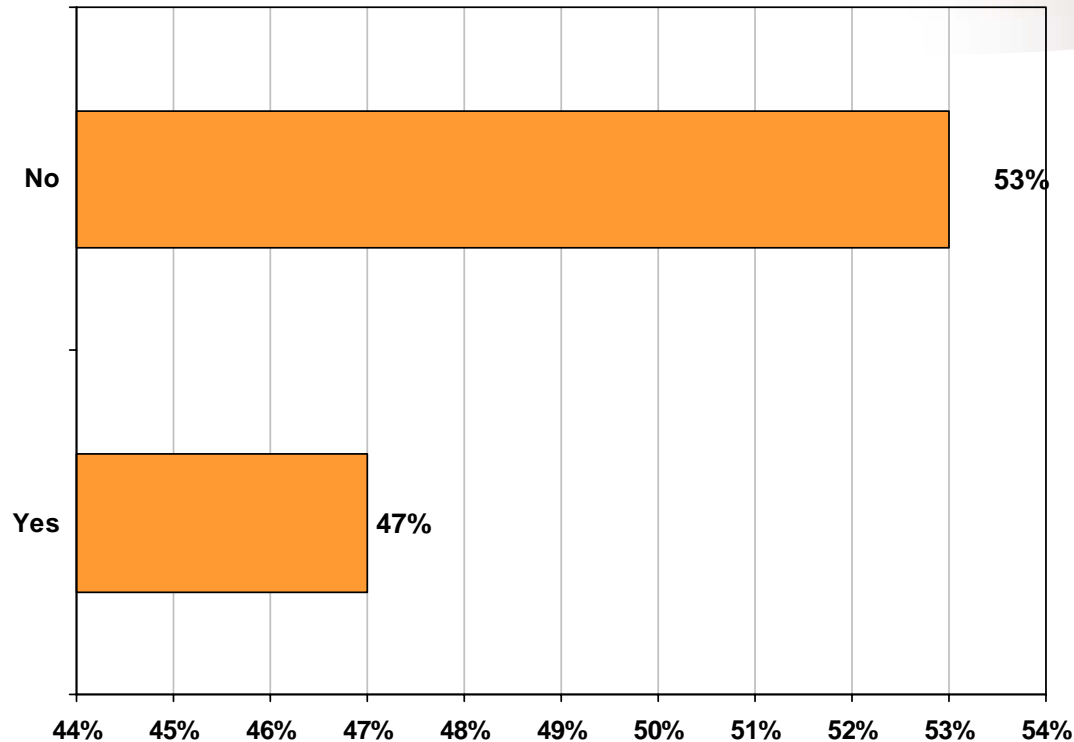
# Percentage Machinery Five Or More Years Old



Percentage Chart

n = 75

# Injection Molding Machine Purchase Plans For 2007

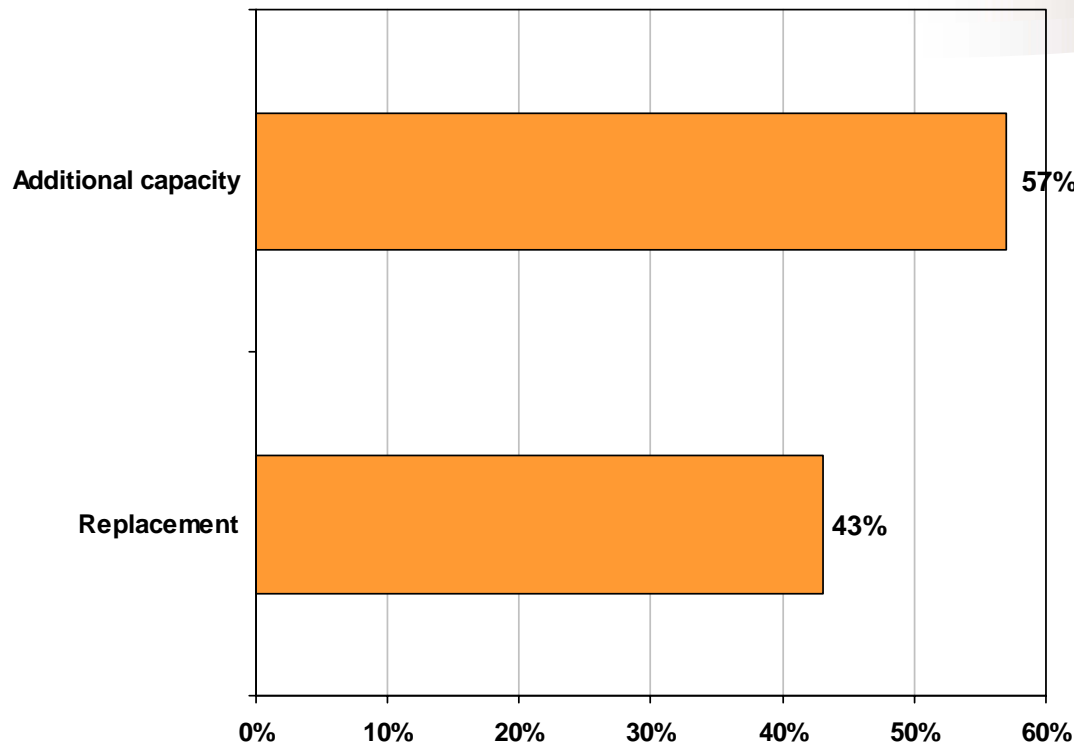


Percentage Chart

n = 78

# I/M Purchase Plans for Replacement Of Old Machinery Versus Adding Capacity

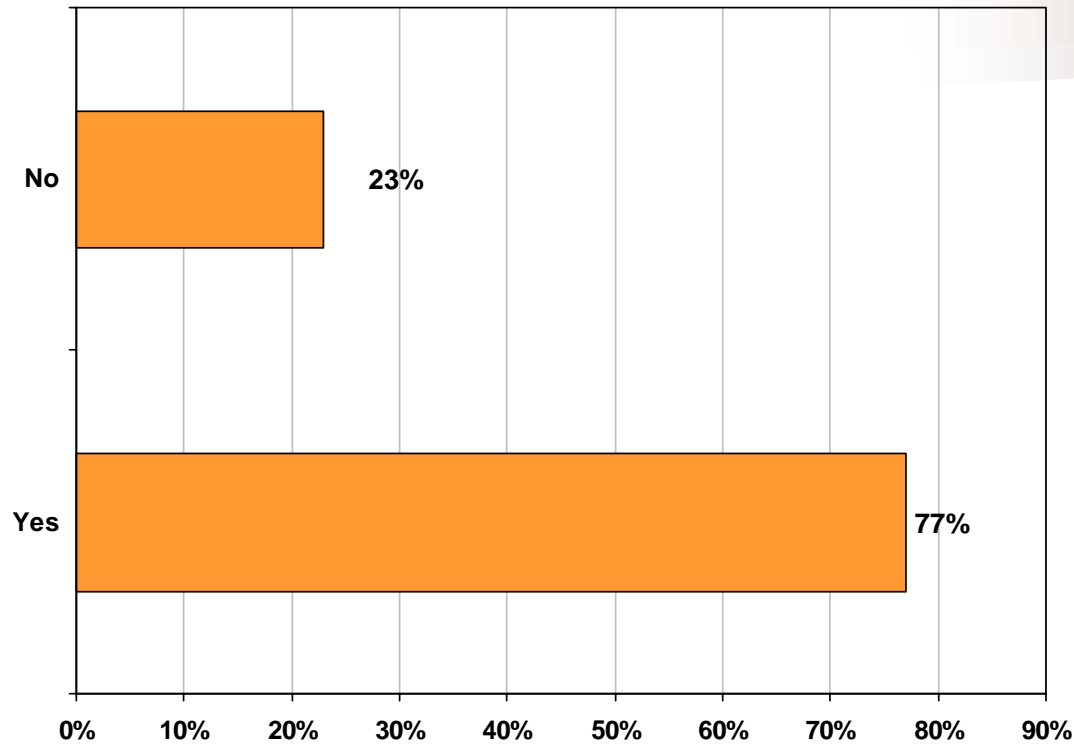
(If you plan to purchase injection molding machines in 2007, is it for replacement of old equipment or for additional capacity?)



Percentage Chart

n = 37

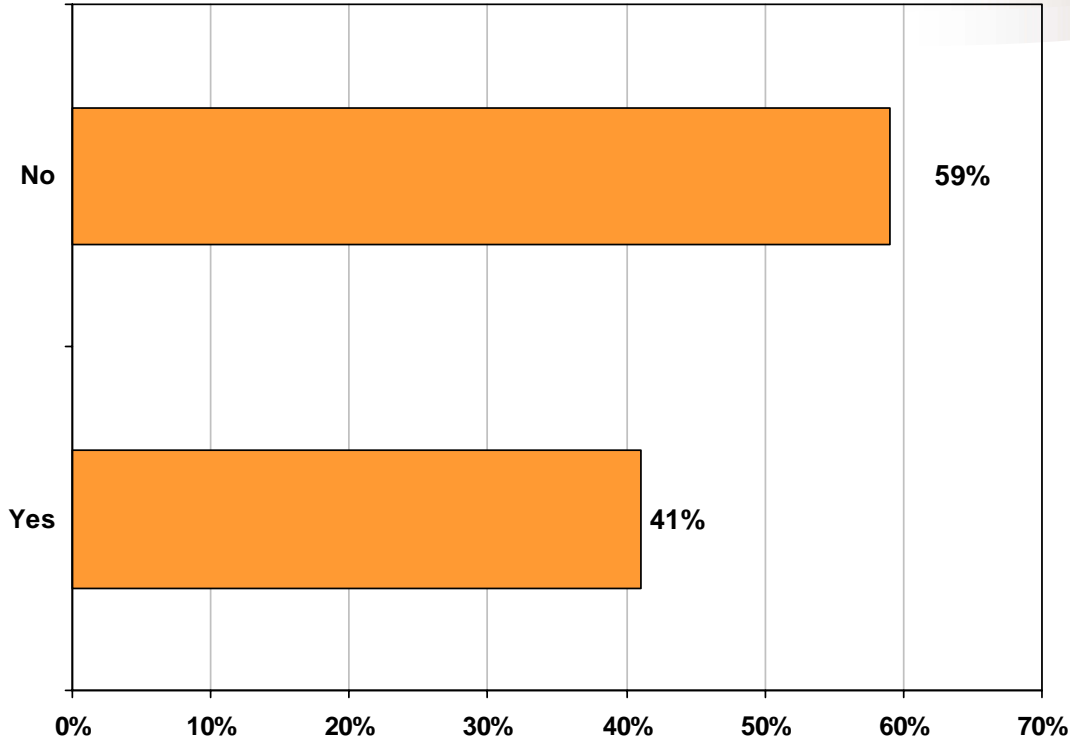
# Auxiliary Equipment Purchase Plans For 2007



Percentage Chart

n = 75

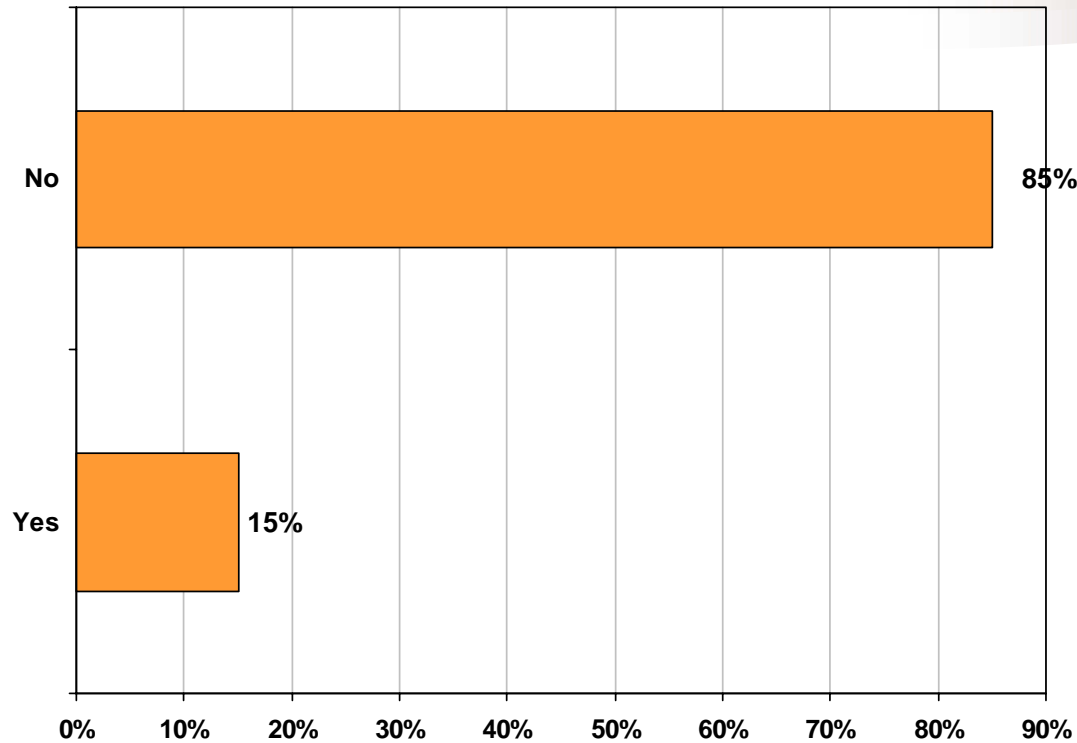
# Linear (3 axis) Robot Purchase Plans For 2007



Percentage Chart

n = 75

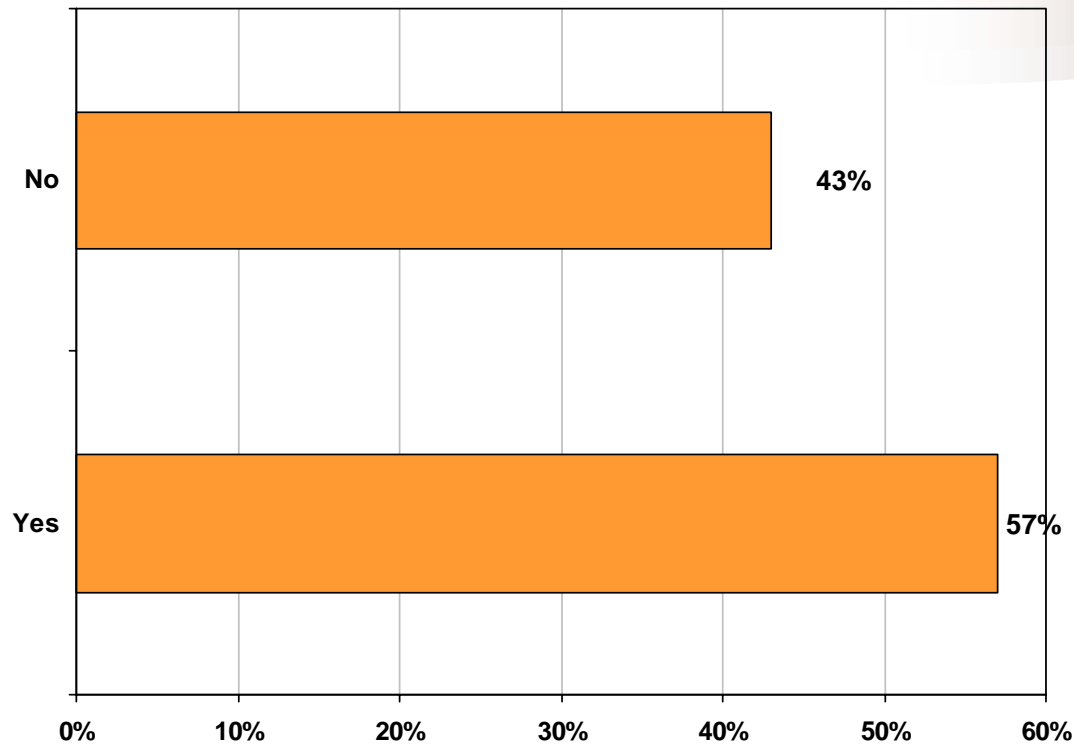
# Articulated (6 axis) Robot Purchase Plans For 2007



Percentage Chart

n = 75

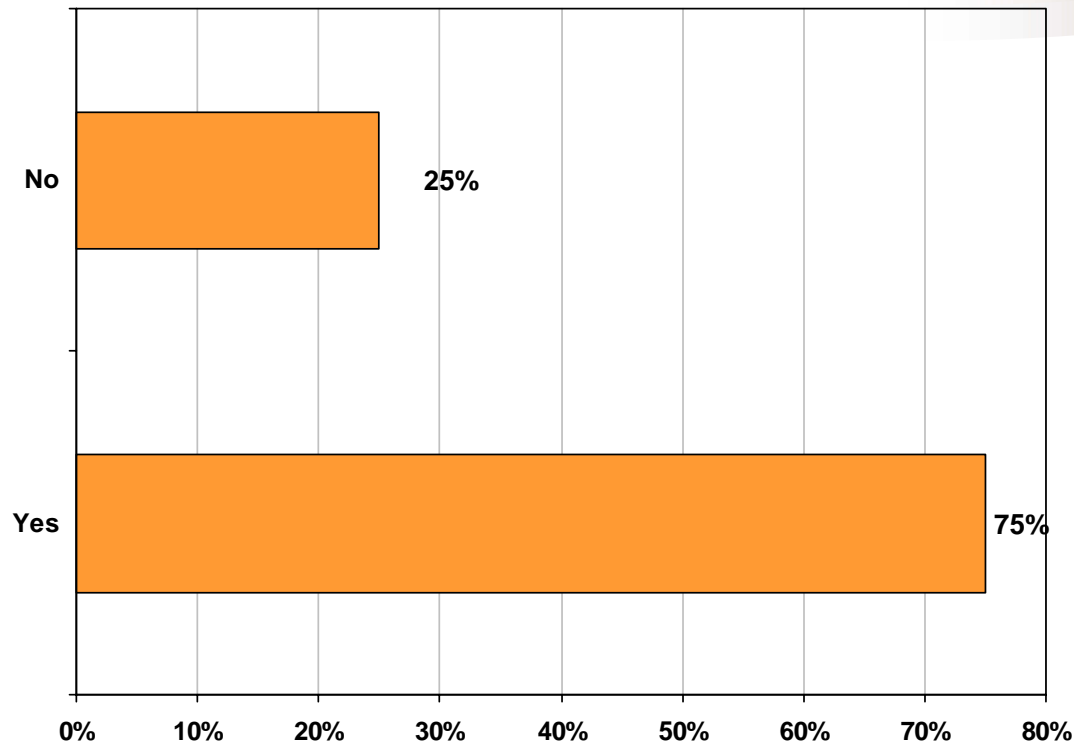
# Percentage That Purchased Injection Molding Machines In 2006



Percentage Chart

n = 75

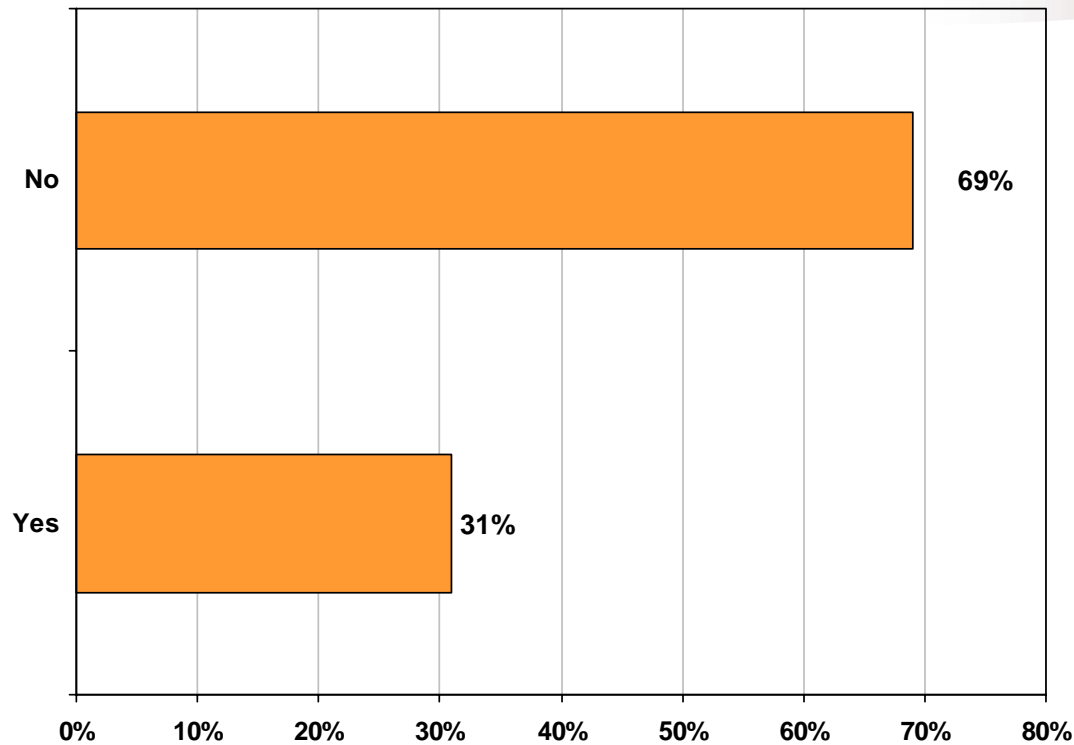
# Percentage That Purchased Auxiliary Equipment in 2006



Percentage Chart

n = 73

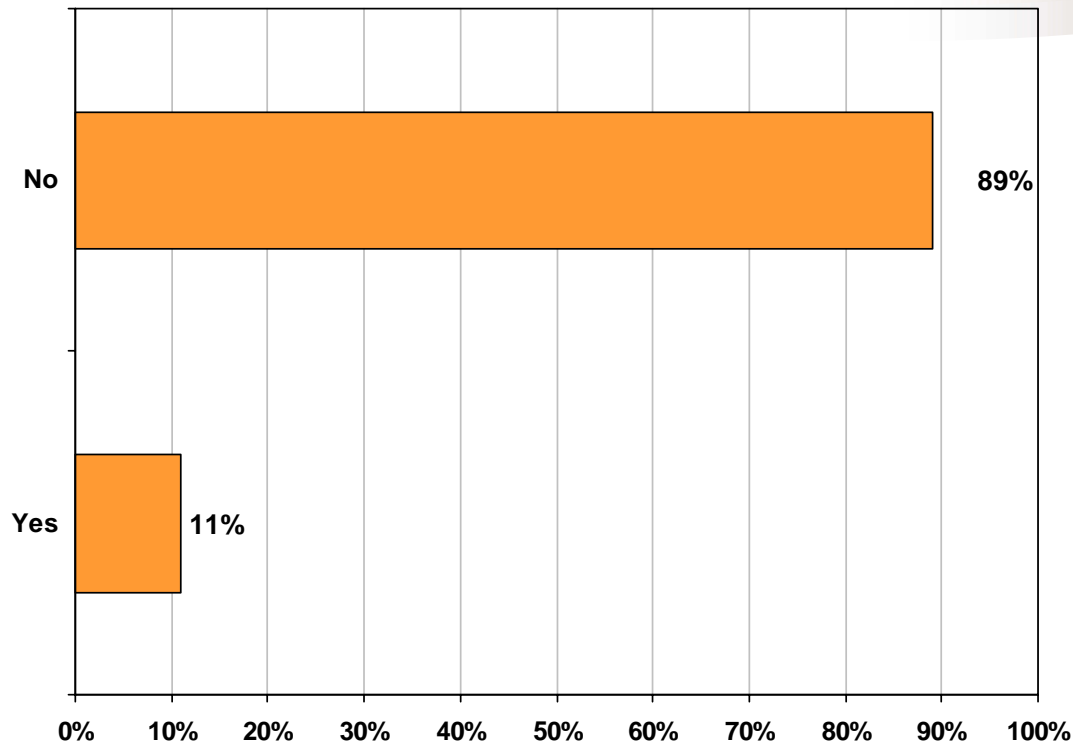
# Percentage That Purchased Linear (3-Axis) Robots In 2006



Percentage Chart

n = 74

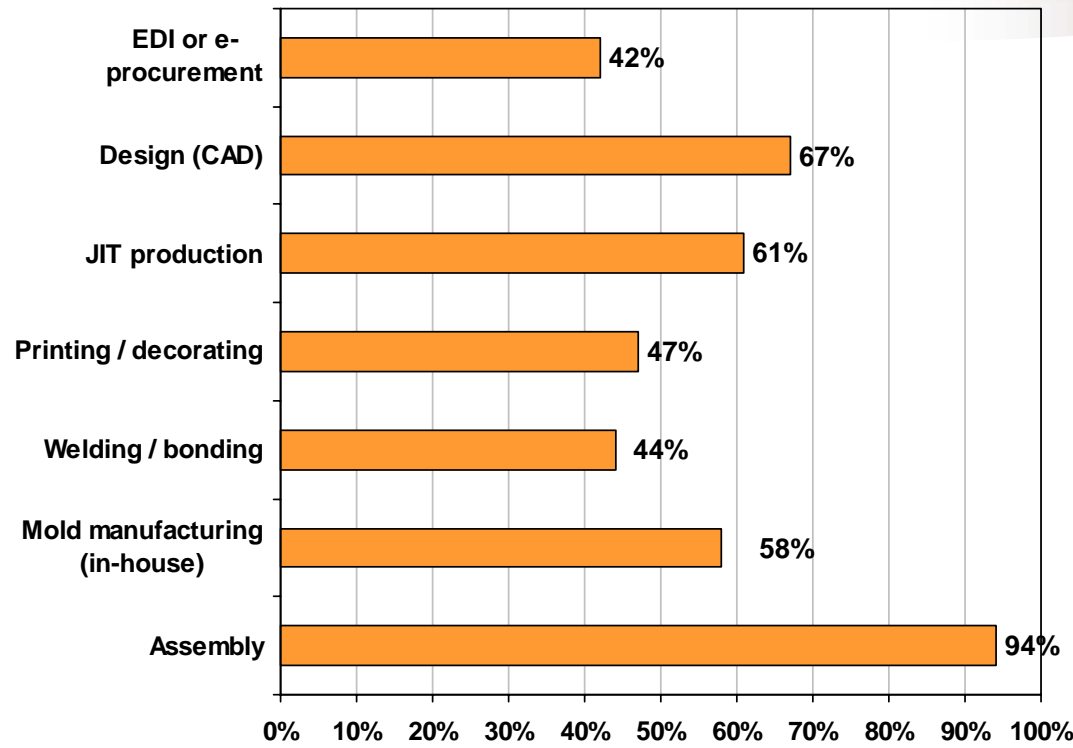
# Percentage That Purchased Articulated (6-Axis) Robots In 2006



Percentage Chart

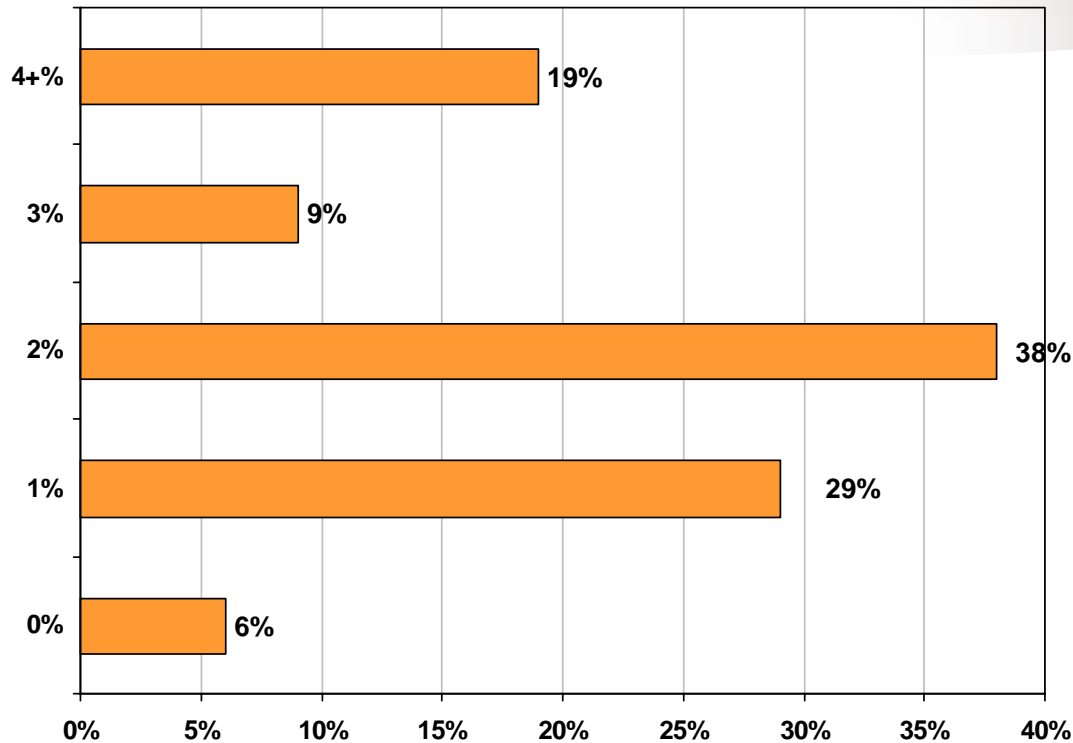
n = 75

# Service Capabilities Provided To Customers



Percentage Chart  
n = 72

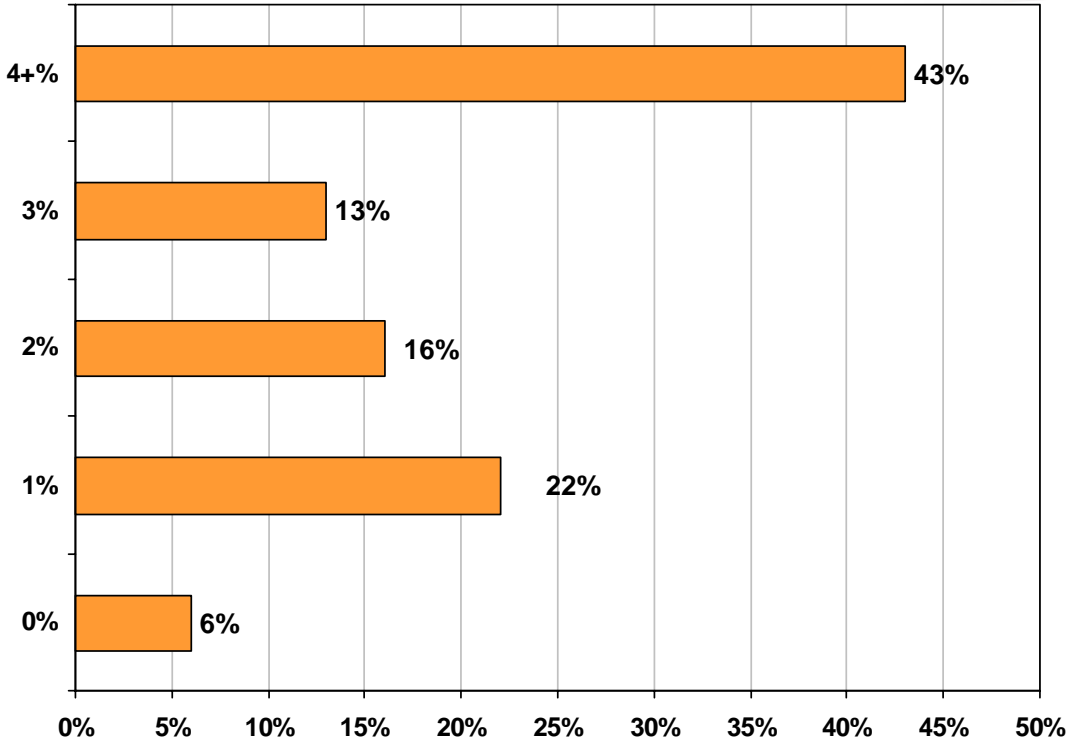
# Percentage 2006 Budgeted Expenses Allocated To Employee Training



Percentage Chart

n = 69

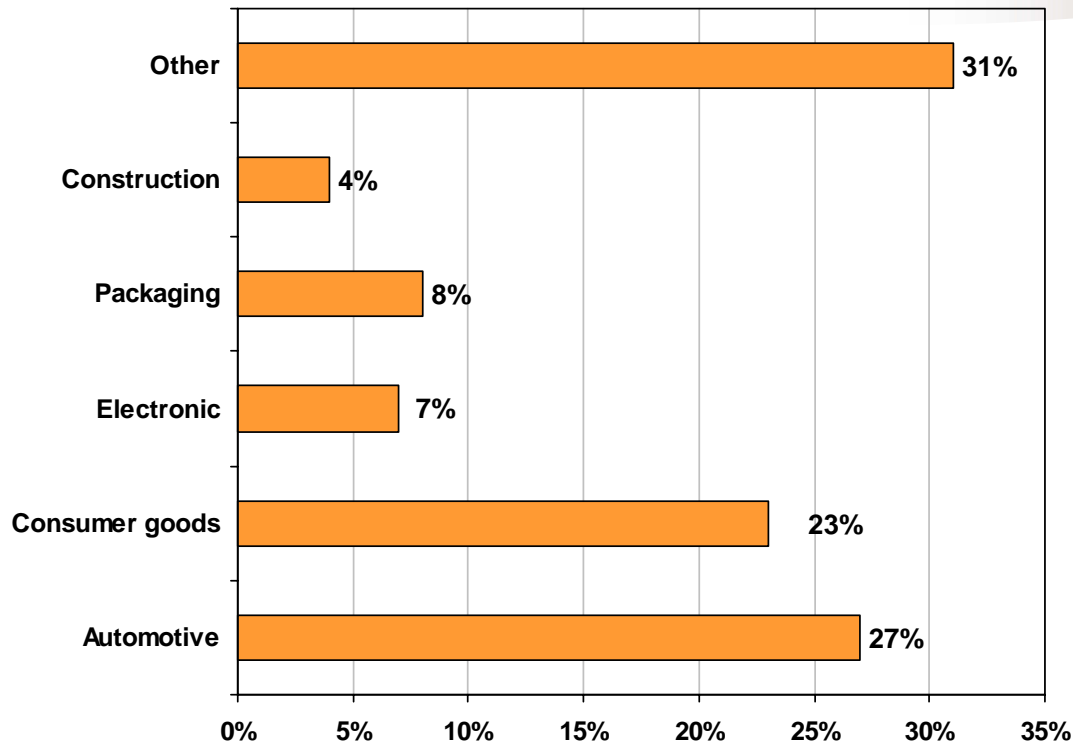
# Percentage 2006 Budgeted Expenses Spent On Product R&D



Percentage Chart

n = 68

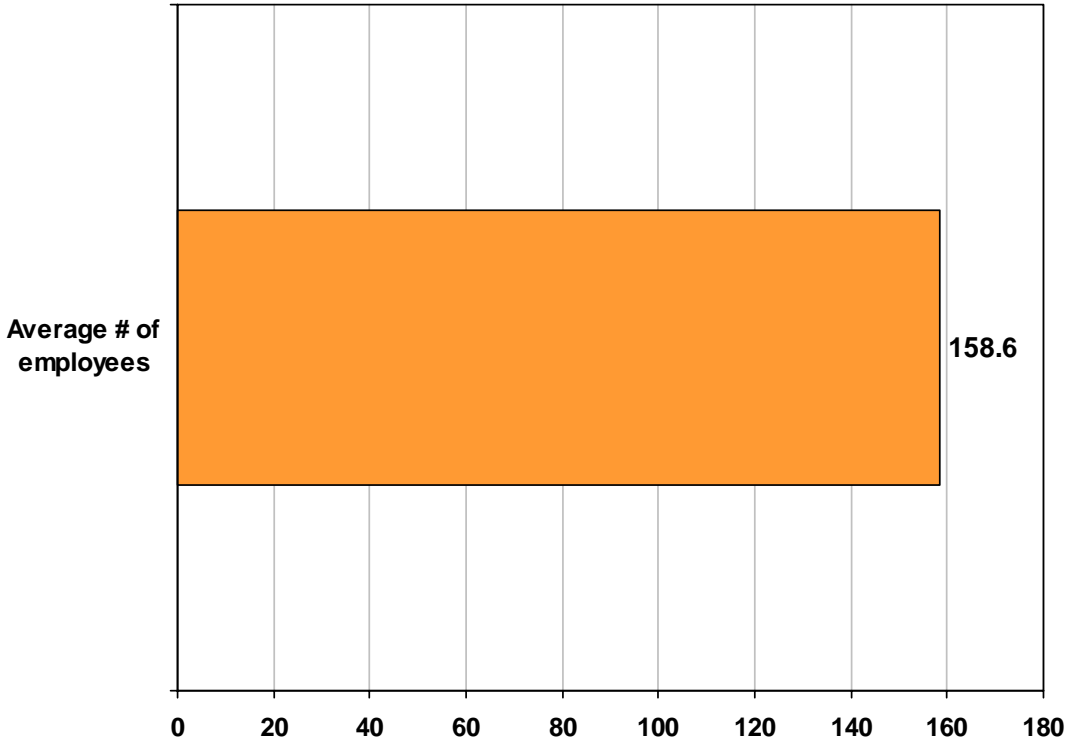
# Main Market Served



Percentage Chart

n = 71

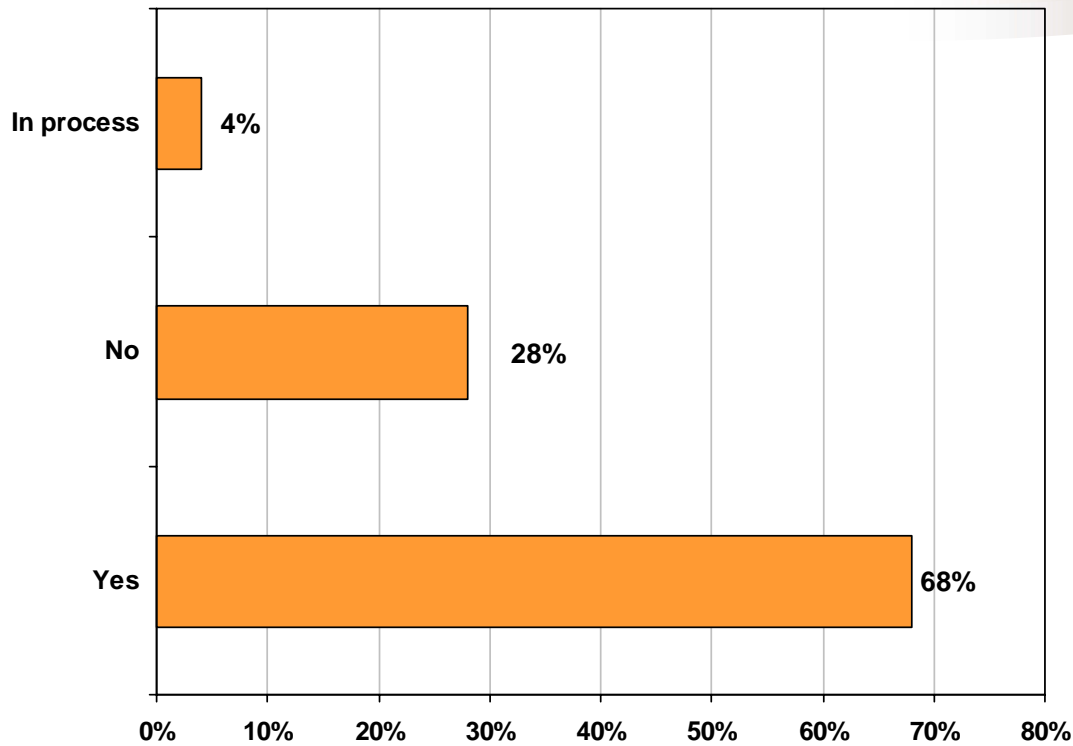
# Average number of employees



Percentage Chart

n = 67

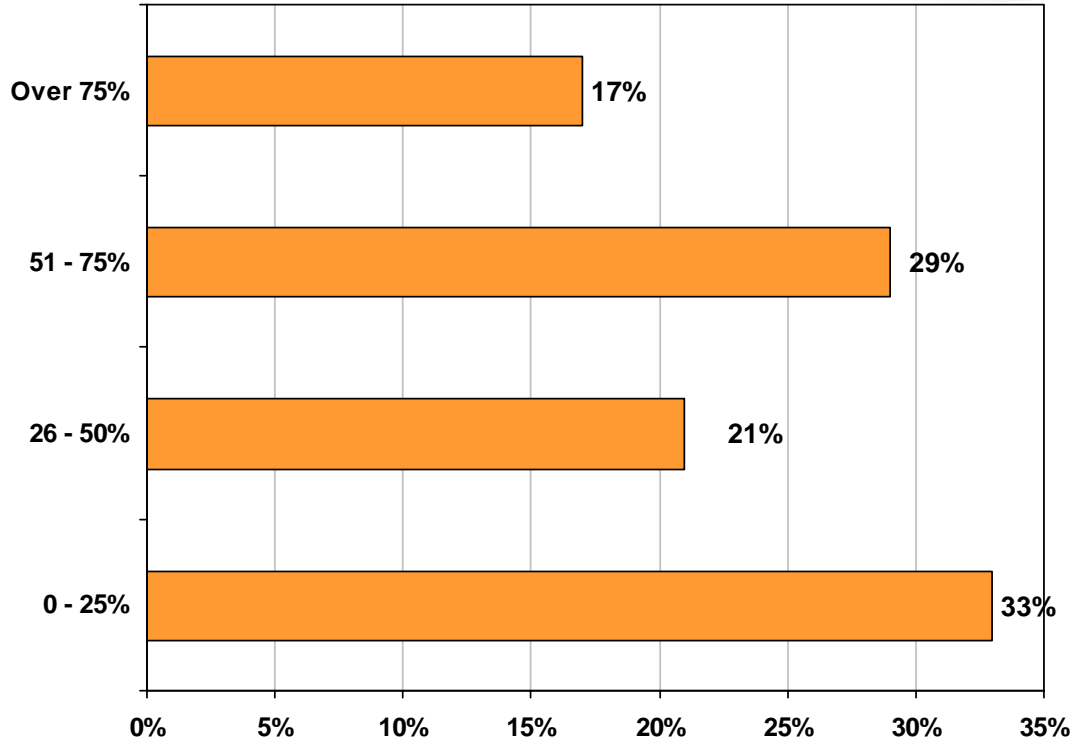
# ISO Or QS9000 Certification



Percentage Chart

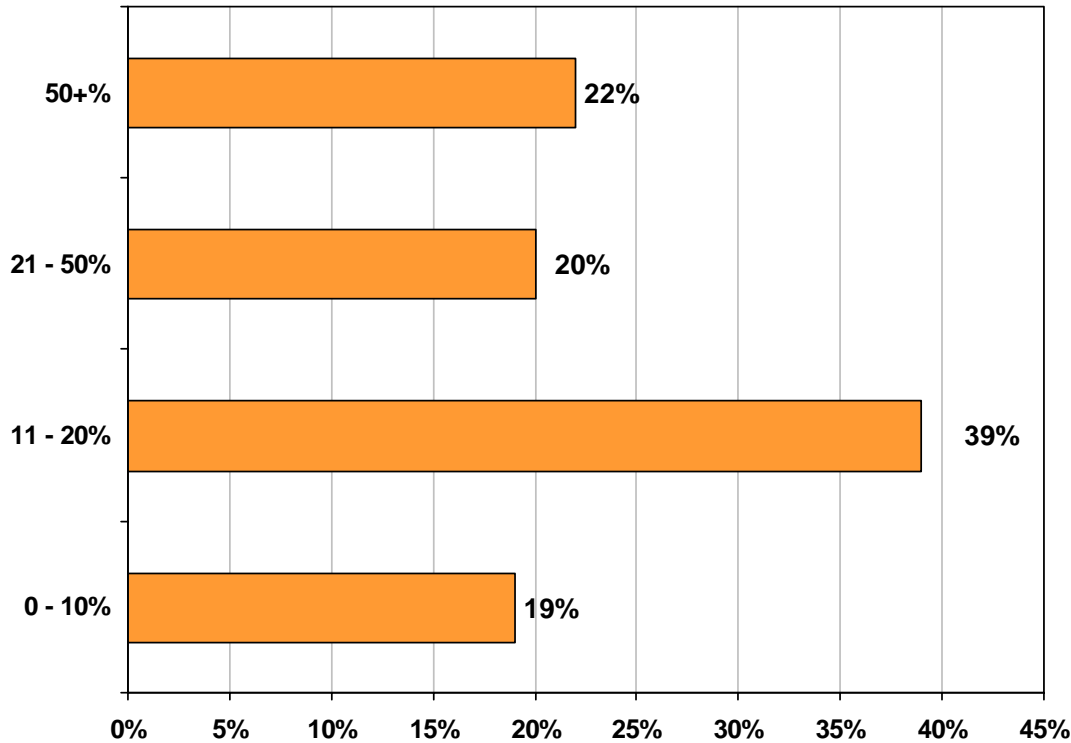
n = 71

# Percentage Products Shipped Outside Canada



Percentage Chart  
n = 70

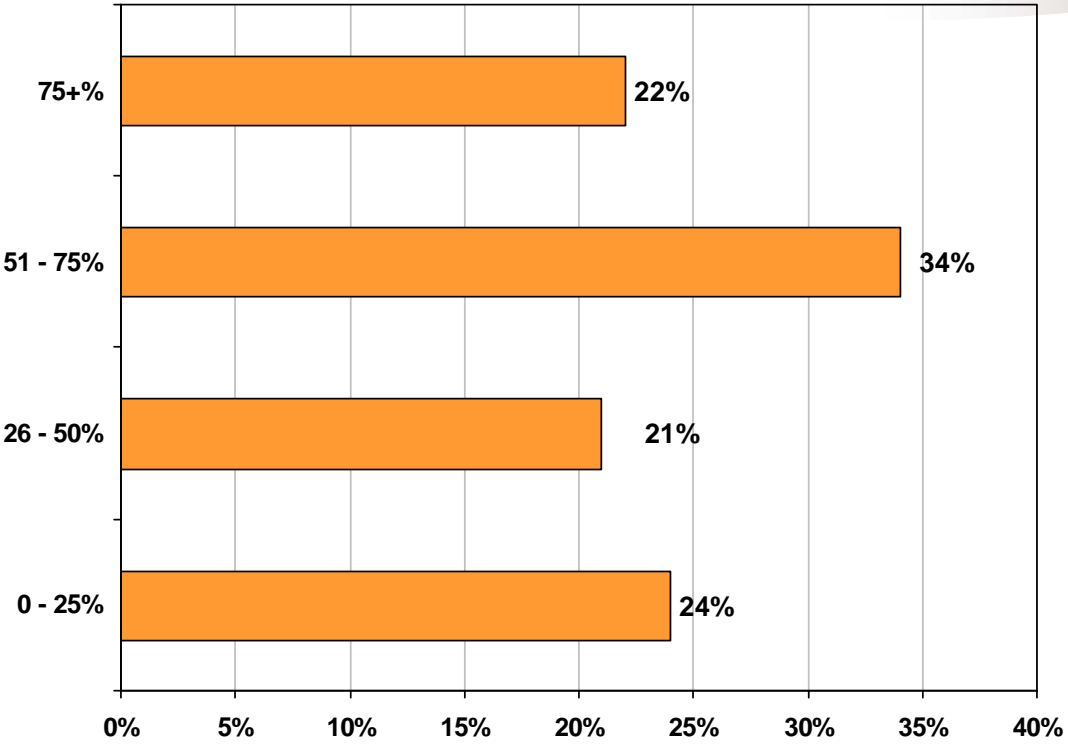
# Percentage Quotes That Turn Into Business



Percentage Chart

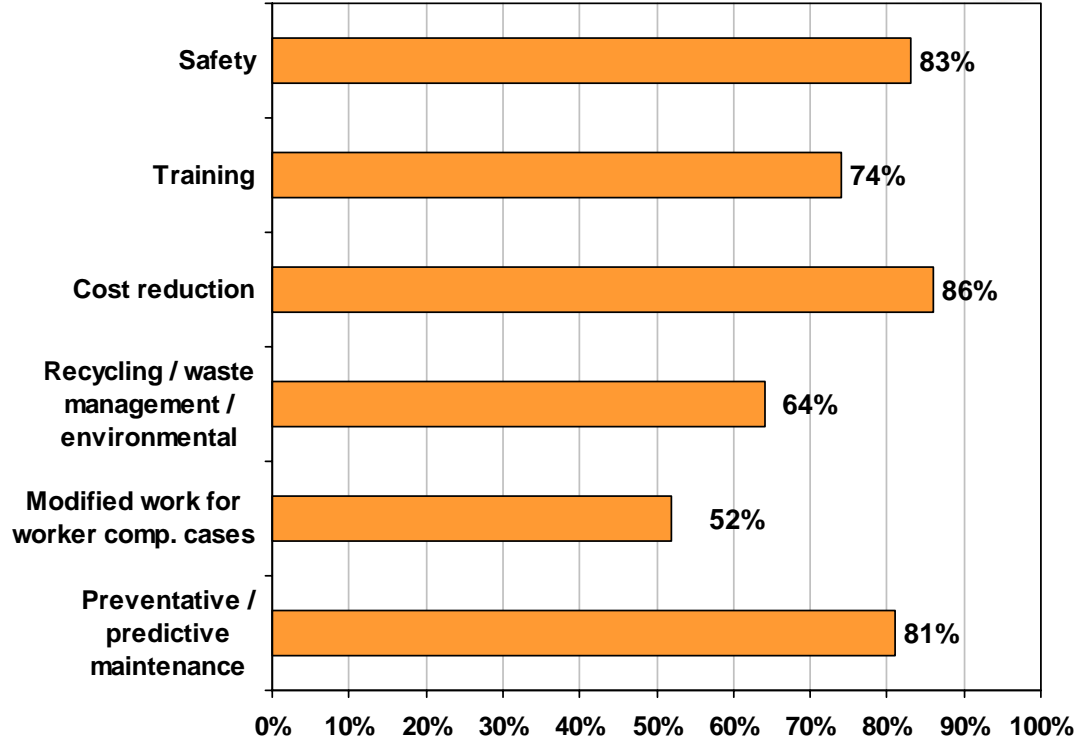
n = 69

# Percentage Customers Representing New Business (renewed contract or new part)



Percentage Chart  
n = 68

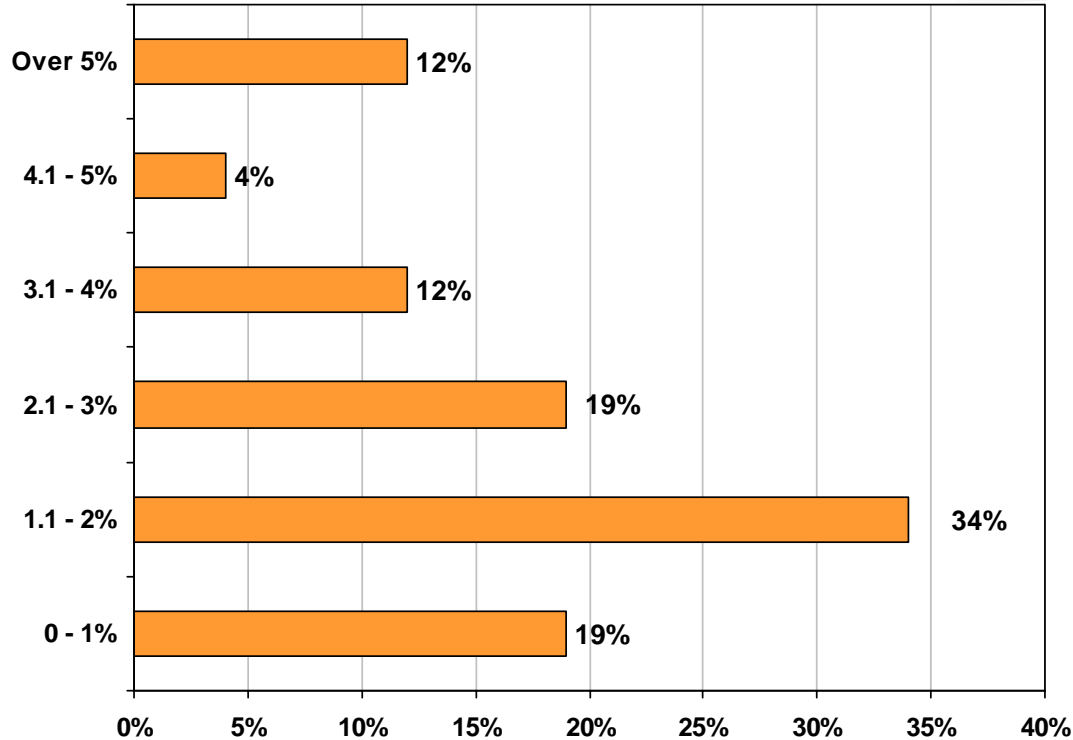
# Implementation Of Formal Policies And Programs



Percentage Chart

n = 69

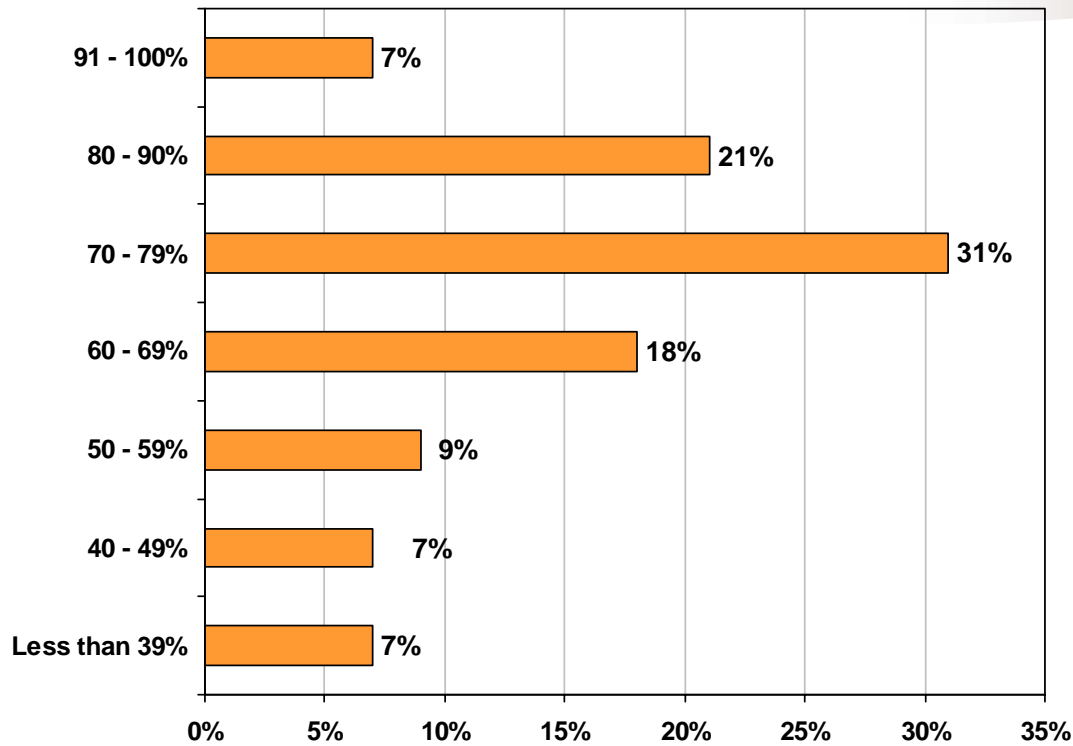
# Average part reject rate October 2005 to November 2006



Percentage Chart

n = 68

# Average machine utilization rate October 2005 to November 2006

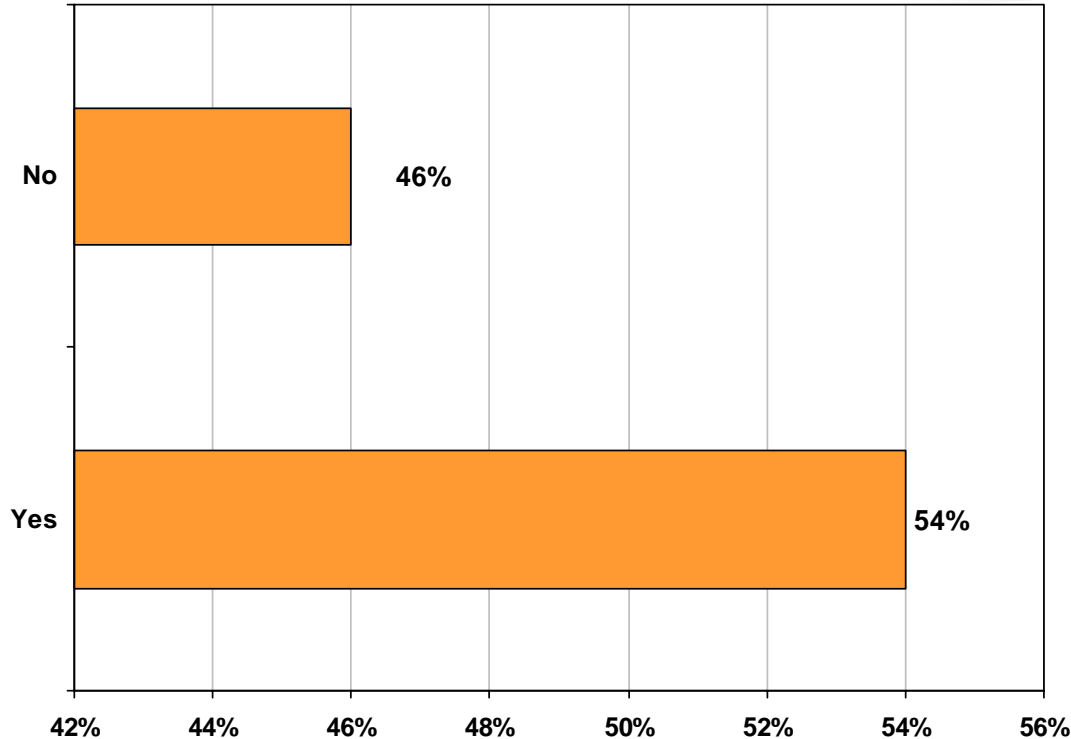


Percentage Chart

n = 68

# Internet Purchasing Of Equipment, Resin Or Shop Supplies

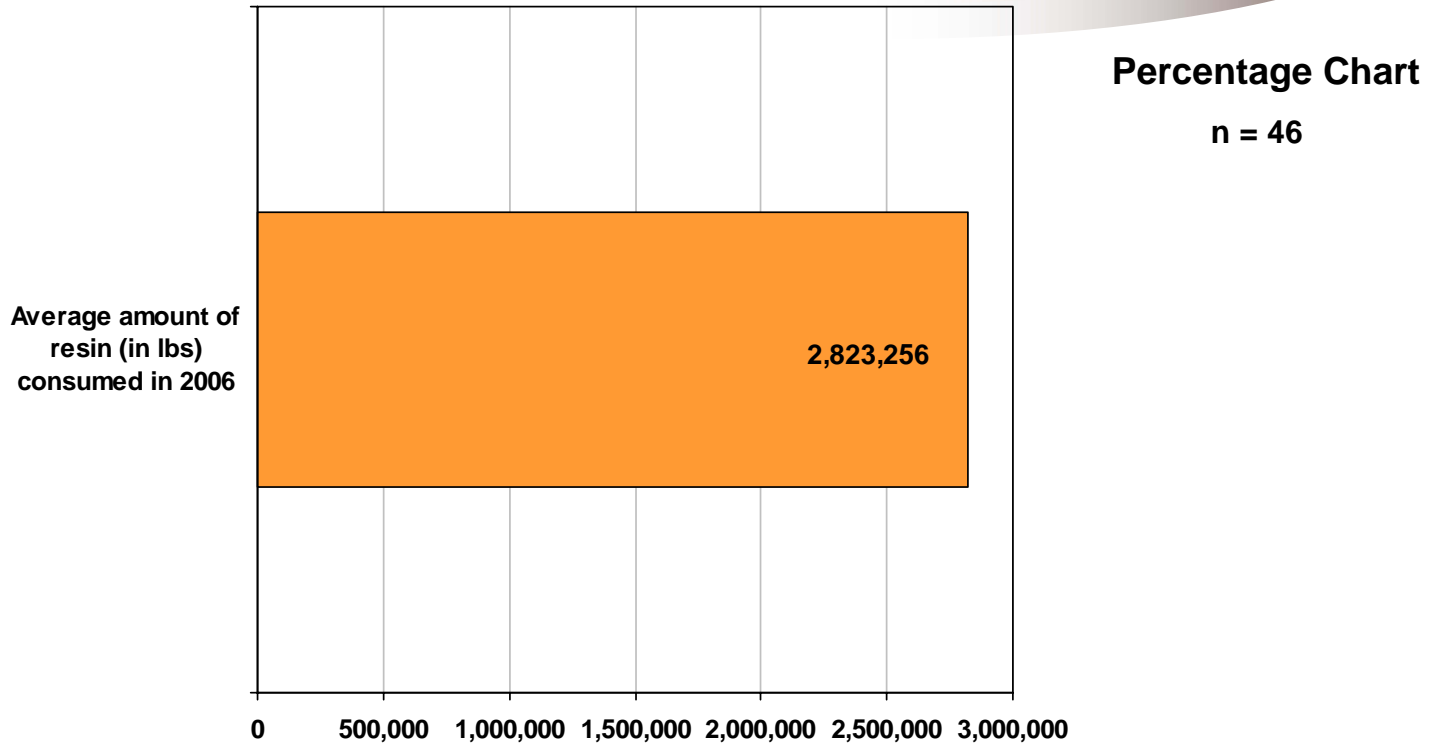
(In the past 4 weeks have you used the internet to buy Business related items?)



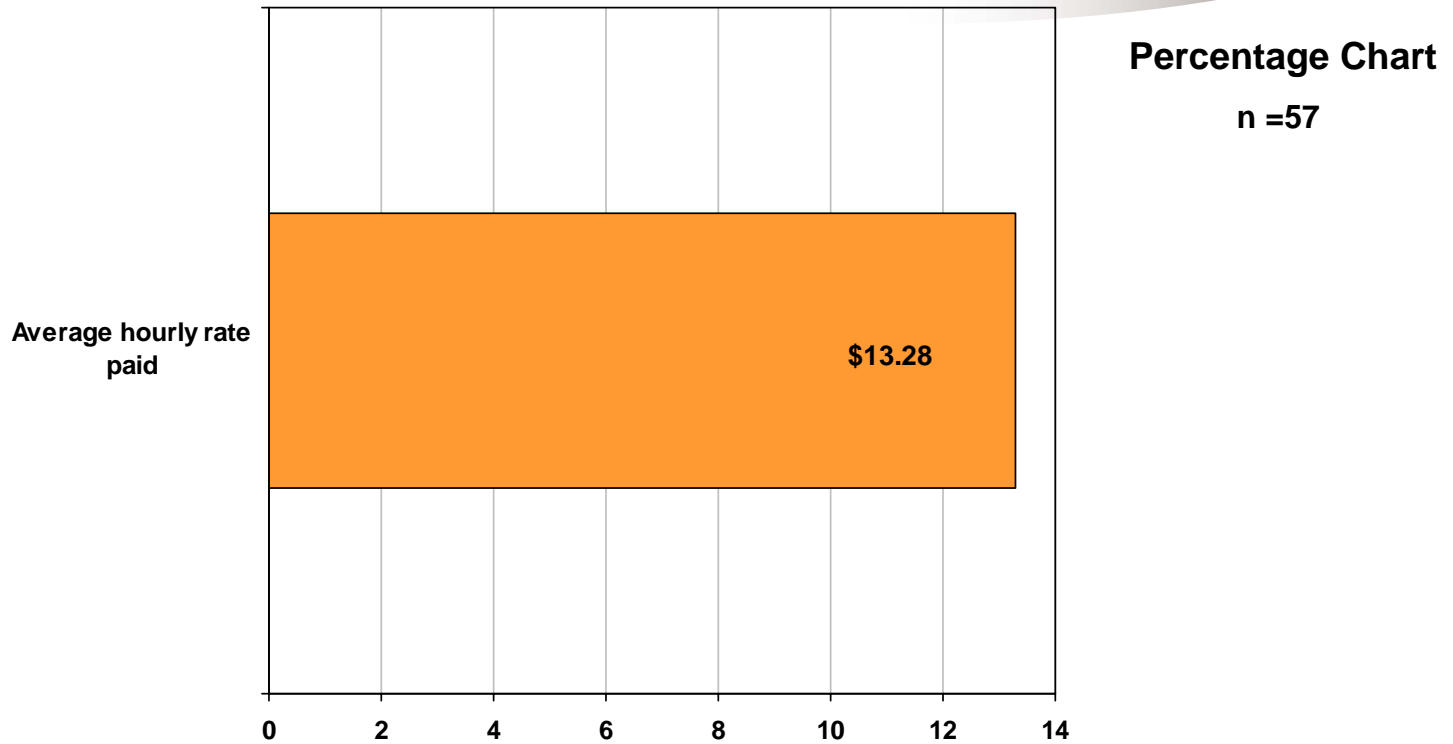
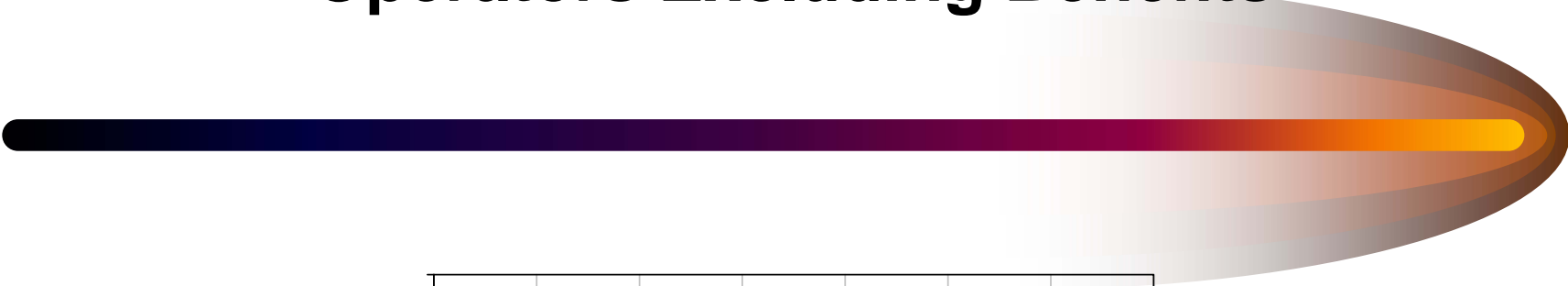
Percentage Chart

n = 65

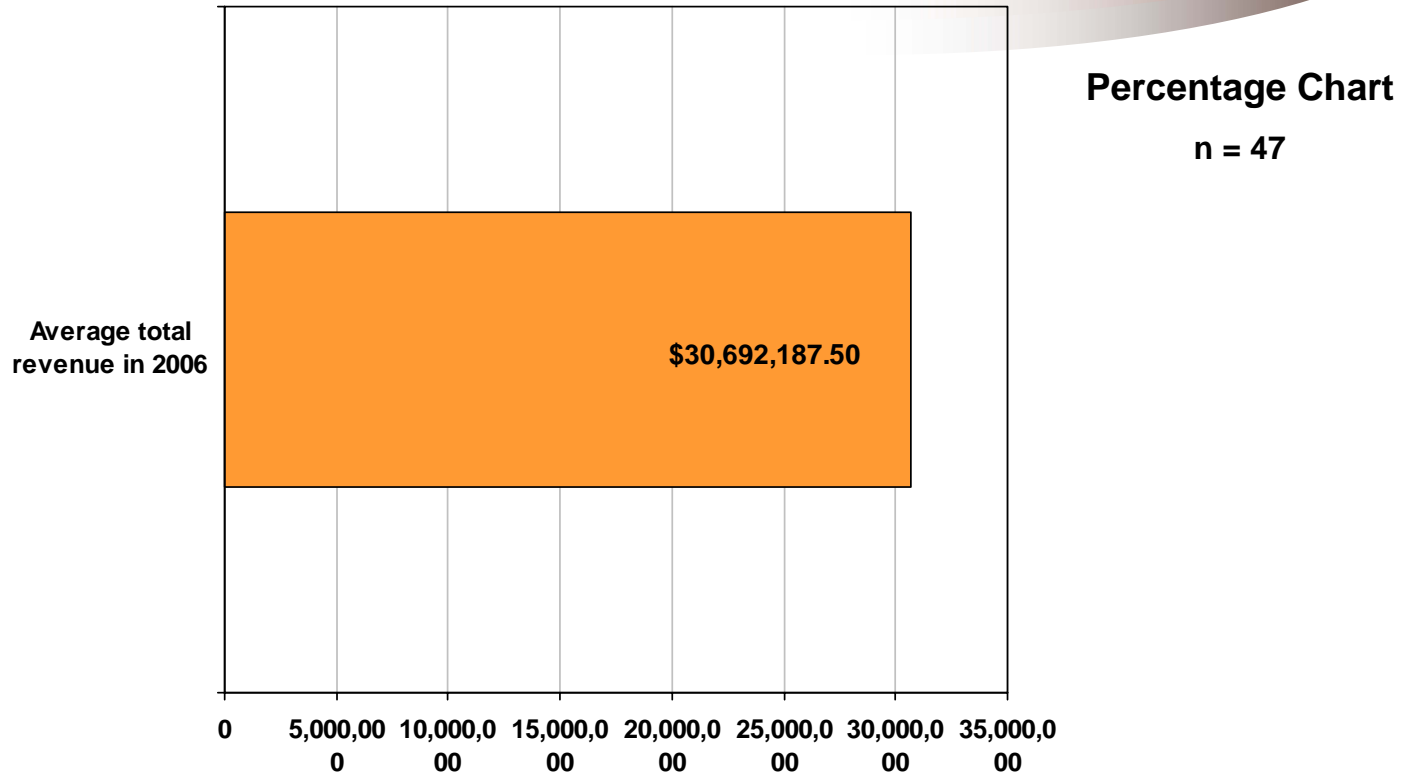
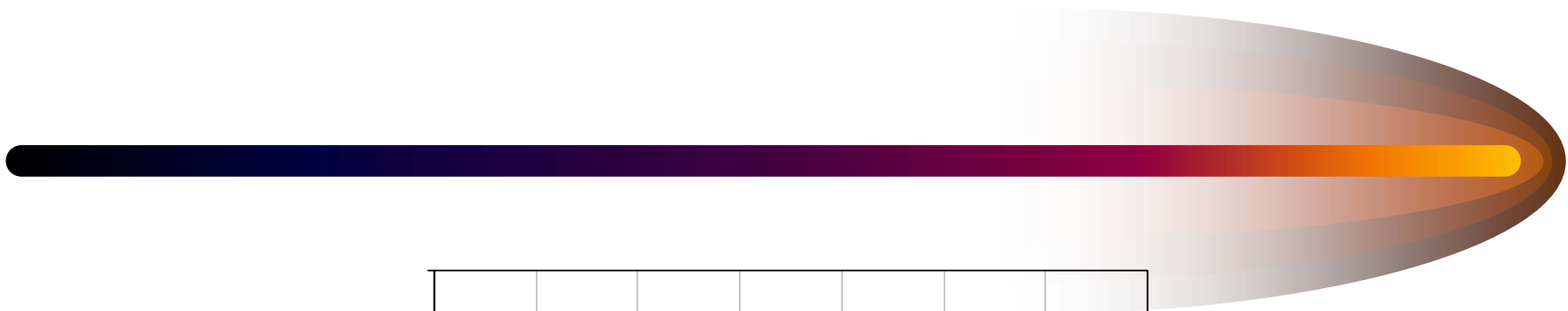
# Average Estimated Amount Of Resin Consumed In 2006 (lb.)



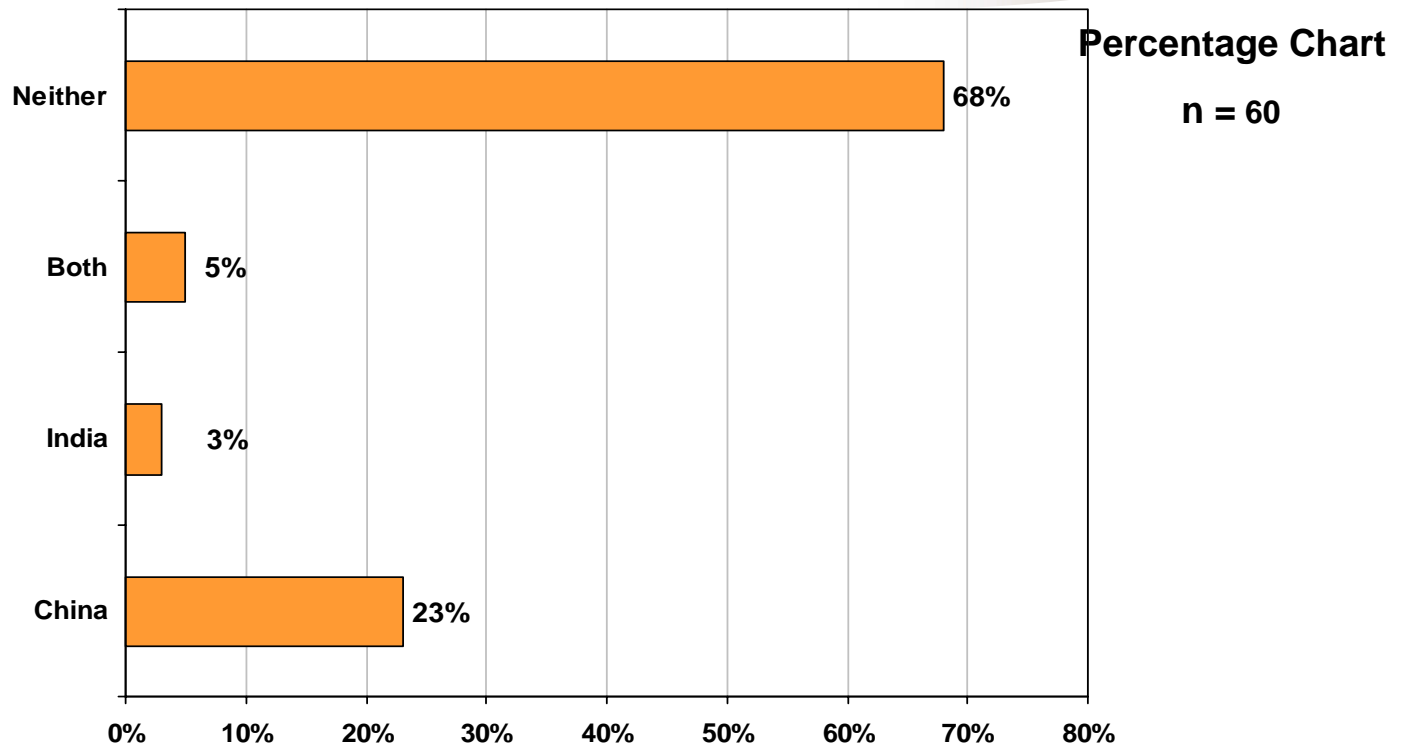
# Average Hourly Rate Paid To Machine Operators Excluding Benefits



# Average Estimated Revenue For 2006 (\$million)

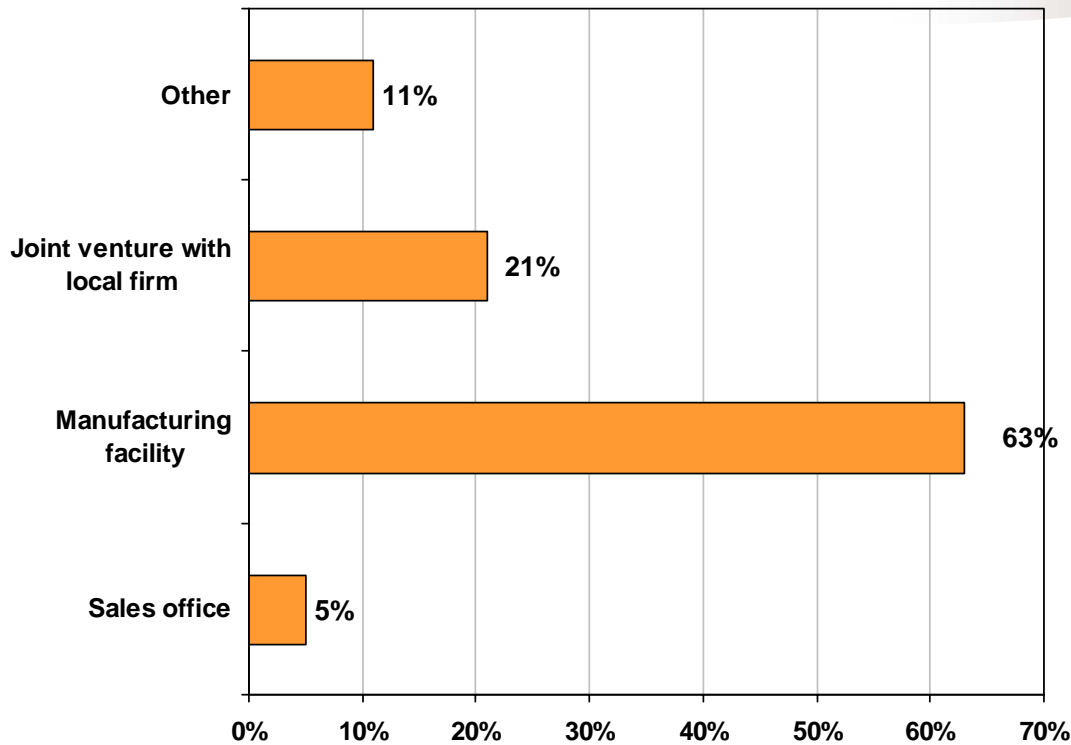


# Presence In Chinese And/Or Indian Markets



# Type Of Operations In China And/Or India

(If you do have a presence, what type?)

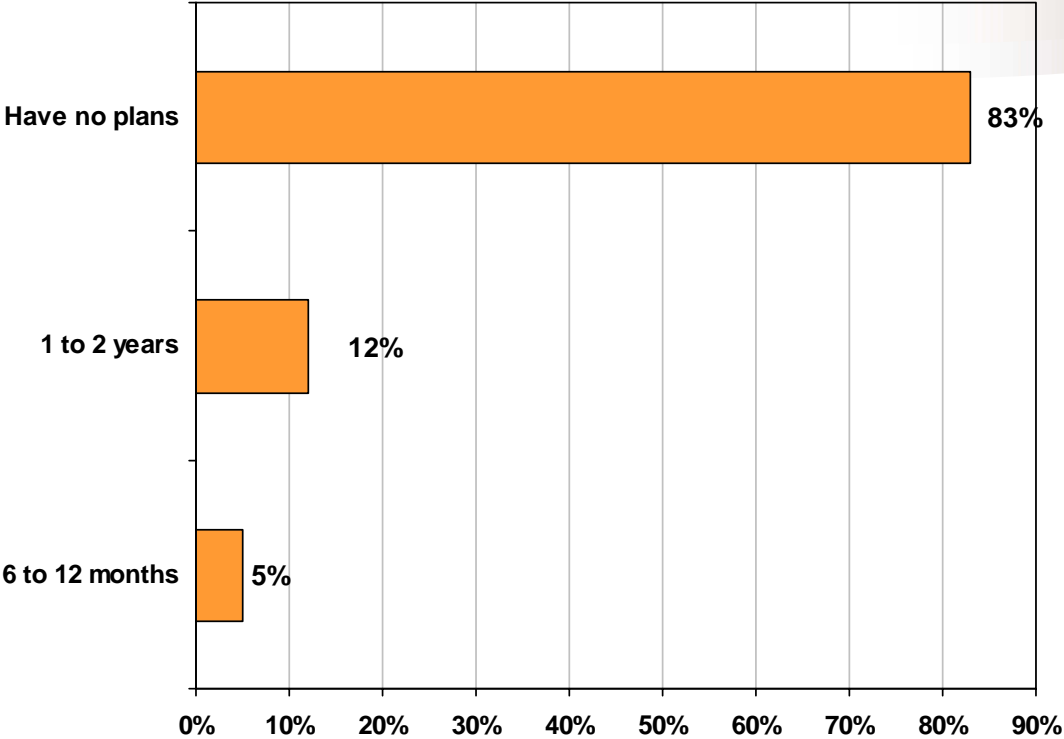


Percentage Chart

n = 19

# Plans To Enter Chinese And/Or Indian Markets

(If you don't have a presence, do you plan to enter those markets in the next:)



Percentage Chart

n = 42

# Injection Molders In This Survey, By Location

